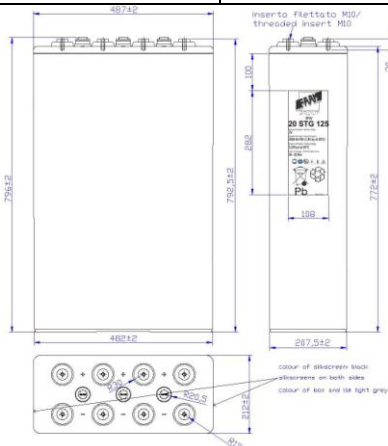




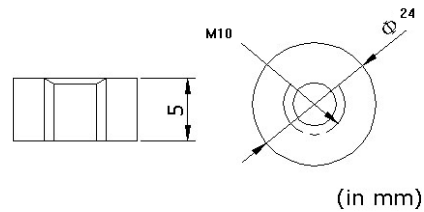
20STG125

PHYSICAL SPECIFICATION

| | | |
|-------------------------|------------------|---------------------------------------|
| Nominal Voltage | 2V | Container and lid ABS, FV0 on request |
| Nominal Capacity (10Hr) | 2500Ah | |
| Dimension | Length | 212 ±2mm |
| | Width | 487 ±2mm |
| | Container Height | 772 ±2mm |
| | Total Height | 796 ±2mm |
| Drawing 400310-0 | Weight | 200,0 Kg ± 5% |
| Standard Terminal | Bolt Type: M10 | |



Bolt-and-nut terminal
Bolt Type: **M10**



ELECTRICAL SPECIFICATION

| Characteristics | | | Charging curves @ 20°C | |
|----------------------------------|--------------|--|------------------------|--|
| Capacity | 10 hour rate | 2500,00Ah | | |
| | 8 hour rate | 2331,44Ah | | |
| | 5 hour rate | 2023,80Ah | | |
| | 3 hour rate | 1930,71Ah | | |
| | 1 hour rate | 1679,99Ah | | |
| Capacity affected by temperature | 40°C | 102% | | |
| | 20°C | 100% | | |
| | 0°C | 85% | | |
| Internal Resistance 0,12 mΩ±10% | | SCC 14000 A ±10% | | |
| Charge Voltage | Standby | Max Charge Current 500 A Floating Voltage 2,23V at 20°C Bost Charge 2,35V at 20°C Temperature Coefficient -20 mV/°C | | |

Constant Current(Amp) and Constant Power (Watt/Cell) Discharge Table at 20°C

| Time | | 30 min | 60 min | 90 min | 2 h | 3 h | 5 h | 8 h | 10 h | 100 h | 120 h |
|-------|---|---------|---------|---------|---------|---------|--------|--------|--------|-------|-------|
| 1,65V | A | 2295,00 | 1559,99 | 1289,29 | 866,67 | 667,86 | 429,05 | 300,00 | 262,50 | 33,97 | 28,82 |
| | W | 2845,44 | 2414,13 | 2060,39 | 1734,66 | 1365,76 | 922,62 | 645,12 | 537,60 | 65,39 | 55,69 |
| 1,70V | A | 2217,86 | 1493,32 | 1244,05 | 835,71 | 643,57 | 425,00 | 297,14 | 260,00 | 34,30 | 29,10 |
| | W | 2748,16 | 2310,96 | 1988,10 | 1672,70 | 1316,10 | 913,92 | 638,98 | 532,48 | 66,03 | 56,23 |
| 1,80V | A | 1928,57 | 1333,33 | 1130,95 | 773,81 | 607,14 | 404,76 | 285,71 | 250,00 | 32,98 | 27,98 |
| | W | 2432,00 | 2063,36 | 1807,36 | 1548,80 | 1241,60 | 870,40 | 614,40 | 512,00 | 63,49 | 54,07 |